

FOR LEASE

State & Pleasant Valley S.C. Parma, Ohio

Up to 3,500 sq ft available



Description: 7383 State Road located at the lit intersection of State & Pleasant Valley. Roughly 1.9 miles from Broadview Road and .96 miles from Ridge Road. The plaza is 31,740 square feet.

Co-Tenants: Inline with Dollar General, 360/24 Hour Fitness, Subway, etc.

Nearby Tenants: CVS, Marathon Gas, Stancato's Restaurant and Catering, etc

Demographics:

Population:

1 mile: 7,577

3 miles: 80,417

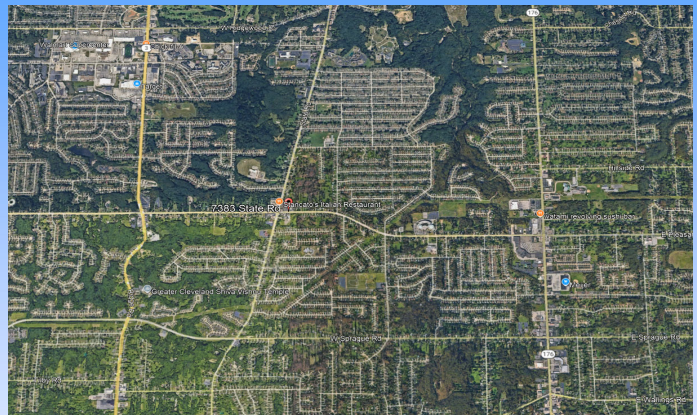
5 miles: 202,788

Average Household Income:

1 mile: \$74,480

3 miles: \$71,555

5 miles: \$72,912



For more information contact:
Craig Cohen
Craig@CohenCommercialGroup.com



Cohen Commercial Group
6151 Wilson Mills Road, Suite 100
Highland Hts, Ohio 44143
(216) 223-5060

The information submitted herein is not guaranteed. Although obtained from reliable sources, it is subject to errors, omissions, prior sale/lease and withdrawal from the market without notice. Cohen Commercial Group, its affiliates, agents, and employees, and Seller/Landlord make no representations about the accuracy of said information and recommend individual investigation to certify its validity.